

# HANDBOOK

PRACTICAL INFORMATION

Welcome to  
BORDEAUX  
SCIENCES  
AGRO



BORDEAUX  
SCIENCES  
AGRO



## FOREWORD

---

By using its Education, Research and Technology transfer know-how, Bordeaux Sciences Agro is involved in agricultural issues in the areas of agro-ecology, food, forestry and wood. These major issues of society, security and the competitive economy are at the heart of the international agenda.

It is a school with a human touch, a high-level educational team, a campus with modern buildings, a vibrant student life, near the university campus and in the city of Bordeaux, all in exceptional Nouvelle-Aquitaine!

These are the many advantages offered by Bordeaux Sciences Agro while you successfully complete your programs in all fields of agronomy.

You will find here all the information and news about our school.

Welcome to Bordeaux Sciences Agro!

Sabine Brun-Rageul, Dean



# CONTENT

<b>Welcome and general information</b>	<b>7</b>
About Bordeaux	7
The city.....	7
Its climate.....	8
The cost of living .....	9
Its surroundings .....	9
About Bordeaux Sciences Agro	10
Its environment.....	10
French Higher Education System .....	11
Its wine estate.....	13
<b>Few things to think about before your arrival</b>	<b>14</b>
Concerning your studies	14
Exchange students.....	14
Bachelor .....	14
Master, current students.....	15
Concerning other administrative formalities	15
Immigration procedures.....	15
Social Security .....	16
CVEC .....	17
Accommodation reservation.....	17
International driving license .....	18
<b>Few things to think about during your stay</b>	<b>19</b>
Enrollment	19
Izly: how does it work? .....	19
Where you can use Izly? .....	19
Concerning other administrative formalities and practical issues	20
Immigration .....	20
Accommodation.....	20
University canteens.....	21
Bordeaux Sciences Agro library.....	22
Numerical Working Environment (ENT).....	23
Student associations.....	23
Sports.....	24
Cultural Life	25
Carte Jeune Métropole .....	25
Concerts .....	25
Museums.....	26
Transport In Bordeaux	26
Public transport .....	26
Bordeaux by electric car.....	28
Bordeaux by bike.....	29
Flights from Bordeaux.....	29
Phoning .....	30
Drive fermier.....	31

<b>Few things to think about after your stay</b>	<b>32</b>
Concerning your studies	32
Concerning other administrative formalities	32
Accommodation	32
Bank	32
<b>Additional useful information</b>	<b>33</b>
Where to obtain medical care?	33
<b>Emergency numbers</b>	<b>34</b>
Pharmacy open 24h/24h	34
<b>Contacts</b>	<b>35</b>
<b>Glossary</b>	<b>36</b>
Basics	36
Making travel arrangements	36
Hungry?	37
Useful terms	37
How to ask for directions in french	37
Greetings: hello and goodbye	38
<b>French environment and culture</b>	<b>39</b>
Business hours	39
Environment	39
Smoking	40
Eating and Shopping	40
Eating out	40
Restaurants	41
Food and grocery shopping	41
The tradition of the farmers' market in France	41
Administrative formalities	41
<b>Bordeaux Sciences Agro's map</b>	<b>42</b>
<b>Campus map</b>	<b>44</b>
<b>Tram (general map)</b>	<b>46</b>
<b>Tram (A, B, C and D Lines)</b>	<b>48</b>



The International Relations office team is looking forward to welcoming you to Bordeaux Sciences Agro. We are certain that you will have an interesting, exciting and enjoyable experience at our institution and in our city.

At Bordeaux Sciences Agro, like at most other universities in France, people from different countries who speak different languages study, live and socialize together. Living with people from all over the world is a great experience and offers many new and exciting opportunities. We are looking forward to supporting you during your time in Bordeaux and we will do our best to make your stay as comfortable as possible.

Please, feel free to contact us!

- The first step towards a successful stay as an international student is reading the following information guide

### About Bordeaux

#### THE CITY



As the capital of the Nouvelle-Aquitaine Region, the city of Bordeaux enjoys a privileged position within France's leading region for value-added agriculture. Farmland and forests here account for more than 80% of the territory.

Nouvelle-Aquitaine is the world's foremost region for registered wines of origin, France's leading region for production with quality and/or labels of origin, and home to the largest planted forest in Europe.

This exceptional situation combined with its own advantages gives Bordeaux Sciences Agro a unique advantage to develop academic and scientific partnerships around the world and welcome foreign teachers and students.

Besides the world-renowned vineyards, the city has a number of fascinating museums, splendid architecture, culture, fame and outstanding cuisine.

In 2007 Bordeaux was added to the UNESCO World Heritage list as “an outstanding urban and architectural ensemble” of the 18th century, the largest urban area ever to receive this acclaim. It has become a very attractive area, has a unique lifestyle and the city’s exceptional vitality shows its openness to the world.



## ITS CLIMATE

Bordeaux’s climate is usually classified as an oceanic climate ; however, the summers tend to be warmer and the winters milder than most areas of similar classification.

Substantial summer rainfall prevents its climate from being classified as Mediterranean. Winters are mild because of the prevalence of westerly winds from the Atlantic.

The average seasonal winter temperature is 7.1°C (44.8°F), but recent winters have been warmer than this. Frosts in the winter are commonplace, occurring several times during a winter, but snowfall is very rare, occurring only once every three years.

Summers are warm and long due to the influence from the Bay of Biscay where the surface temperature reaches 21 to 22°C (70 to 72°F).



## THE COST OF LIVING

A monthly budget around €700 is necessary to live in Bordeaux.

With your student status, you have access to certain services such as: University cafeterias and restaurants, Bordeaux Sciences Agro's accommodation (priority given to international students), libraries, reduced transport fees, sports facilities...

For the first month the budget is triple the usual amount as there are extra costs linked to settling in your accommodation, subscribing to Social Security, signing contracts for electricity, telephone, water...

## ITS SURROUNDINGS

The Nouvelle-Aquitaine region is located in the south-west of France and brings together 12 departments starting from the border to the Loire Atlantique to the Spanish border.



It is one of the most famous wine regions in the world but also the largest producer of fruits and vegetables while having on its land the biggest forest of Europe. Most of the region's exportations come out from the agricultural and food sector although leading industries (aerospace and para-chemistry) are also important clusters.

The Nouvelle-Aquitaine region offers a wide range of activities, a dynamic tourism through the privileged and protected spaces. You can discover the Atlantic coast, the Landes forest, the prehistoric sites of Périgord, prunes of Agen, the mountains of the Basque country and Bearn.



## About Bordeaux Sciences Agro

### ITS ENVIRONMENT

In a calm and green environment only a few minutes away from downtown Bordeaux, the school provides its students with the best living conditions during their studies.

For example, if you want to do some physical activities, we have many sports facilities on campus: a gymnasium, a soccer field, a rugby field, weights room and a dojo. The Bois de Thouars (Thouars Wood) is also two minutes away from the campus and offers a great environment for runs and walks through the different seasons.



For more than 50 years, Bordeaux Sciences Agro has been able to forge privileged relationships with companies. These ties supplement the courses offered by our institution by helping increase the professionalism of the materials taught and by fostering the professional futures of the graduates by ensuring that the courses are suited to the real world.

## FRENCH HIGHER EDUCATION SYSTEM

The higher education system in France proposes three principal degrees :

- 1 > Bachelor ("Licence"): 3 years (6 semesters) = 180 ECTS
- 2 > Master ("Master"): 2 years (4 semesters) = 120 ECTS
- 3 > PhD ("Doctorat"): 3 years on average (6 semesters) = 180 ECTS

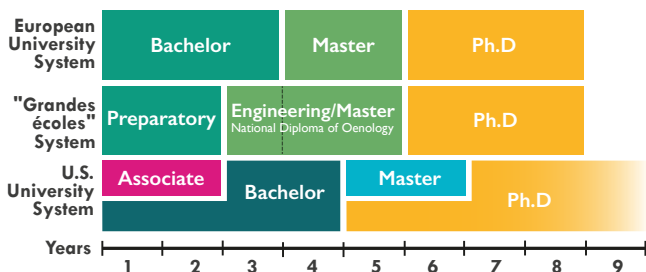
### THE EUROPEAN CREDIT TRANSFER SYSTEM (ECTS)

Each level is attained by acquiring the required number of ECTS (European Credit Transfer System) credits. The academic year is divided into two semesters, and the validation of one semester is equivalent to 30 ECTS credits.

The accumulation of credits at the higher education level depends on academic workload, number of course hours and course objectives.

1 ECTS is equivalent to a teaching unit of 25 to 30 hours.

You can see below the differences between main University systems and the "Grandes Écoles" system with engineering diploma that we propose here in Bordeaux Sciences Agro:



### CLASSES

University classes generally start during the month of September and finish in May/June just before the end-of-year exams.

### SEMESTER

Each University year is divided into 2 semesters. The subjects taught are grouped according to teaching units (UE "unité d'enseignement") that include lectures, tutorials (TD "travaux dirigés") and practical work (TP "travaux pratiques").

## GRADING SYSTEM

In France, the grades range from 0 to 20. 0 is the worst grade and 20 is the best. You have to get a minimum 10/20 to pass.

French Grade	ECTS Grade	Distinction	Definition
16-20	A	Excellent	Excellent
14-15.9	B	Very good	Overall still outstanding work with some minor mistakes
12-13.9	C	Good	Good and sound understanding but some basic mistakes
11-11.9	D	Satisfactory	An average piece of work, clearly showing some deficiencies
10-10.9	E	Pass	The work fulfils the requirements
0-9.9	F	Fail	Improvements would be necessary in order to achieve a pass

## ASSESSMENT TESTS

Two different types of assessment exist:

- ▶ Continuous assessment which validates knowledge with oral and written exams throughout the year;
- ▶ Exams (oral and written) that are taken in one go at the end of each semester.

## FRENCH COURSES DURING THE SEMESTER

At Bordeaux Sciences Agro we offer French classes during the winter and spring semesters.

Courses offer international students language training in French as a Foreign Language, aiming to allow them to develop a scientific and technical vocabulary essential to succeed in course work.

## CALENDAR

Autumn Semester	September - January
Spring Semester	February - May
Summer intership	June - August

## HOLIDAYS

Autumn Break	October - November
Winter Break	December - January
Spring Break	March - April
Summer Break	July - August

## ITS WINE ESTATE



Bordeaux Sciences Agro has its own wine estate:

Château Luchey-Halde, ideally located on 29 hectares of exceptional land at the center of the renowned appellation, Pessac-Léognan.

In 1999, the school began re-developing the estate. In the space of a few years, the vineyard restored its reputation for excellence and began producing high quality red and white wines.



This estate provides students studying the wine industry with an exceptional working tool, and beautifully showcases the school's know-how and commitment.

This wine estate is also used to develop new projects such as an environmental approach to the vineyard.

### Concerning your studies

#### EXCHANGE STUDENTS

Exchange students are allowed to spend one semester or a full year in Bordeaux Sciences Agro if their home university has a cooperation agreement with our institution.

The home university must nominate selected students following its own procedures and communicate a nomination list to the International Office before 1st of May (for exchanges beginning in the autumn semester) or 1st of November (for exchanges beginning in the spring semester).

In order to make a course timetable and to complete a “Learning Agreement”, exchange students must discuss with their study advisor at the home university which course units would be relevant and recognized as a contribution to their own degree program.



Nominated students must then complete our “foreign students online application form” before the middle of June, (you can check the website for further information), and send their application package to Bordeaux Sciences Agro’s International Office.

Please remember that exchange students will remain registered at the home university and will thus pay tuition fees there. The ECTS credits obtained at Bordeaux Sciences Agro will be recognized by the home university at the end of the stay.

#### BACHELOR

To be eligible to apply for the Bachelor program, candidates are required to have:

- ▶ **Completed 2nd year of undergraduate studies** (equivalent to French “BAC + 2” Level or U.S. associate degree of 2 years) **in the following subjects:**
  - ▶ Biology
  - ▶ Chemistry
  - ▶ Biochemistry
  - ▶ Microbiology
  - ▶ Fermentation and/or food sciences
  - ▶ Agriculture
  - ▶ Mathematics
  - ▶ Physical sciences

## ► English international certificate of level B2

Please note that tuition fees for the Bachelor degree are €9,000. The tuition fees include: registration and general administrative costs, classes and travel costs for study visits. Fees do not include living expenses.

## MASTER, CURRENT STUDENTS

Candidates are selected on the basis of academic and/or professional records and on their motivation. **To be eligible to apply for the Master program**, candidates are required to have:

### ► An undergraduate degree of at least 3 years (i.e. bachelor's degree, or the equivalent, from an accredited college or university) **in one of the closely related fields:**

- |                                     |                                  |
|-------------------------------------|----------------------------------|
| ► Business management and economics | ► Agronomy/Agricultural Sciences |
| ► Administration                    | ► Food/Plant                     |
| ► Marketing                         | ► Sciences & technologies        |
| ► Accounting and Finance            |                                  |

### ► English international certificates of Level B2 (only for the Master of Science in Vineyard and Winery Management)

Applicants expecting their Bachelor Degree can obtain a conditional admission. Candidates must complete our online application form between 15th of February and 1st of June.

Please note that tuition fees for the Master degree are €10,000 (per annum), the whole training being €20,000. The tuition fees include: registration and general administrative costs, classes and travel costs for study visits.

Fees do not include living expenses.

## Concerning other administrative formalities

### IMMIGRATION PROCEDURES

Visa are only required for non-European students.

### EXCHANGE STUDENTS

Bordeaux Sciences Agro will provide you with an acceptance letter once your project is confirmed. This letter will help you clear the visa procedure at your home country.

## BACHELOR & MASTERS

If your country is listed on the following website, you will have to go through the mandatory procedure:

<https://pastel.diplomatie.gouv.fr/etudesenfrance/dyn/public/authentification/login.html;codeLangue=EN>

This platform was set up to make all your enrolment procedures in a French higher-education program easier. It is completely dematerialized and helps you follow your procedures up until the visa request. Just create an account and follow the instructions!

Once the mandatory procedure is finished (or if your country wasn't on the list above), you will need to request a student, long-stay visa, type D at your home country French Consulate or Embassy. Bordeaux Sciences Agro will provide you with an acceptance letter once your project is confirmed.

## SOCIAL SECURITY

### ► You are from the EU, Schengen zone or Switzerland

If you have your European Health Insurance card (issued by your country of origin and valid for the entire University year), you do not need to register for the student Social Security system.

### ► You are from Quebec, Canada, with a Health Form provided by the Franco-Quebec protocol

You do not need to register with the student Social Security system because of the reciprocal agreements between the French Social Security system and the Health Insurance system in Quebec. Please come to the International Relation office shortly after your arrival to get the form.

In France, health insurance (or Social Security as it is more commonly known) is obligatory for all students. You must pay up front for your healthcare; your visits to the doctor and your medication. Your expenses are then partially reimbursed by the Social Security at an 80% rate. The remainder of the expenses is your responsibility: you may pay directly yourself, or subscribe to a complementary health insurance (optional) in France or in your country of origin to cover such extra expenses.

### ► You are from outside the EU and Schengen zone

If you are outside an exchange program, you must subscribe to the student Social Security system in France: the form will be given to you shortly after your arrival.



## CVEC

The CVEC or Contribution to the Student and Campus Life finances cultural, sports and health events on the Campus.

It consists of a €91 annual fee that has to be paid, except if you are an exchange student. Depending on your financial situation, you can be exempted from paying the CVEC. However; you will still need to complete the procedure, as the attestation number will be asked when registering at school.

Go to <https://cvec.etudiant.gouv.fr>  
to pay the fee.

- 1 > Write down the name of the name of the town you're going to study in CVEC ("Gradignan").
- 2 > You will then receive the attestation, with the attestation number (circled in red).

The CVEC can be paid online using your credit card, or by cash at a Post office.

## ACCOMMODATION RESERVATION

### ACCOMMODATION ON OUR CAMPUS

You can apply for accommodation on the Bordeaux Sciences Agro campus. Bordeaux Sciences Agro offers different types of accommodation, as :

- ▶ "mini-studette" (12m<sup>2</sup>) for €335 per month;
- ▶ "studette" (18m<sup>2</sup>) for €395 per month;
- ▶ "studio" (22m<sup>2</sup>) for €420 per month.



The monthly bill includes water, electricity and heating.

All these accommodations have private kitchens and bathrooms.

WIFI can also be available for an additional €14.99 fee with a private operator.

Please fill out the form on the school website if you are interested:  
<https://study.agro-bordeaux.fr/campus-life/accommodation/>

## PRIVATE STUDENT RESIDENCE: STUDY'O RESIDENCE

For those who do not want to apply for accommodation at Bordeaux Sciences Agro you can apply at private student residences (STUDY'O), which are further away - about 10min by car, up to 40min walking - and more expensive, a studio being around €585-625 a month.

The studios/apartments are equipped. The monthly rent includes Internet and all charges.

- ▶ Talence Médoquine
- ▶ Talence Université 1 <https://www.studyoresidences.fr/>
- ▶ Talence Université 2

## OTHER PRIVATE ACCOMMODATION

If you are not interested in this type of accommodation, you can also look for an apartment or studio in the private market.

Please find below links (in French) that could help you to find accommodation on your own:

- ▶ Leboncoin:  
<http://www.leboncoin.fr/locations/offres/aquitaine/gironde/>

If you are looking for flat-sharing (please be careful when reading the ads and contacting the persons, to check if they are real ads or hoaxes):

- ▶ appartager.com:  
<http://www.appartager.com/>

You can also consult estate agencies in Bordeaux (please avoid Direct Location or agencies that provide lists of apartments. Most of the time, list providers are a hoax, since apartments are no longer available!).

## TEMPORARY ACCOMMODATION

You can stay for up to three days at the Bordeaux Youth Hostel, for €24,50 per night.

- ▶ Bordeaux Youth Hostel  
22 cours Barbey 33800 Bordeaux  
Tel: 05 56 33 00 70  
[www.auberge-jeunesse-bordeaux.com](http://www.auberge-jeunesse-bordeaux.com)

## INTERNATIONAL DRIVING LICENSE

If you're planning on driving in France (even if it just for renting a car), we recommend that you take the time to make an International Driving License in your homeland. The procedure is free and gives you a translation of your national driving license, which will be needed when driving in France.

### Enrollment

You will be enrolled at Direction des Etudes when you arrive and then you will be provided with student cards, enrolment certificates and Internet access codes.

When you arrive at Bordeaux Sciences Agro, you are provided with your personal Aquipass card. This is your student passport that will be your source of ID and will let you use the many services on offer: entering the school's accommodation, taking out books at the library, eating at the University restaurants...

### IZLY: HOW DOES IT WORK?



The Aquipass card has an integrated Izly electronic card system.

This may be used in the University cafeterias and restaurants thus avoiding the need to pay in cash.

How to load up the Izly card?  
On-line right here!

To login for the first time on [www.izly.fr](http://www.izly.fr), use your institutional e-mail address given by the “Direction des études” at your arrival.

How to load up the Izly card? For Loading/Reloading/Unloading/Online opposition, use a computer a phone or a tablet to connect on [www.izly.fr](http://www.izly.fr)

With the Izly card it will be possible to pay with your phone to the CROUS restaurants of any city in France.

### WHERE YOU CAN USE IZLY?

You can use your Izly card on:

- ▶ University canteens of the CROUS;
- ▶ Other services such as photocopier, vending machines, CROUS laundry, etc;
- ▶ On online ordering sites of the CROUS or other Higher Education institutions.

## Concerning other administrative formalities and practical issues

---

### IMMIGRATION

---

#### Non-EU STUDENTS

Once you arrive in France: Your passport/visa needs to be stamped by the Border Police at the airport! Without this stamp, the visa is not valid.

Within 3 months, you need register online to validate your visa on the following website:

<https://administration-etrangers-en-france.interieur.gouv.fr>

To complete the procedure, you will need:

- ▶ A valid email address
- ▶ The information written on your visa
- ▶ Fill in the date of your arrival in France
- ▶ Fill in your residential address in France
- ▶ A credit card to pay online the €60 "Taxe de Séjour" (Tourist tax)

Once you've completed the procedure, you can download your visa confirmation.

You will receive two emails, the first one with your login (which will enable you to download your visa confirmation later if you haven't done it yet), and the second one with all the information that you've filled online (you can download them from the email if necessary).

### ACCOMMODATION

---

#### FINANCIAL AID FOR ACCOMMODATION

As with French students, you may qualify for student accommodation aid from the CAF (Caisse d'allocations familiales - Family Benefits Agency). For this aid, you must be a student, have a rental contract in your name. For non-EU students, you will need a residence permit that is valid for over 3 months. You may complete your application on-line via the following website: <https://www.caf.fr>

#### ACCOMMODATION INSURANCE

Personal insurance is obligatory no matter your accommodation, whether you are staying with a friend or renting in the private sector. The insurance amount varies (between €30 and €70 per year) depending on the size of the apartment, the number of rooms and the risks insured (fire, theft, water damage, civil liability, damage to adjacent buildings...).

## RENT

If you're living in our campus accommodation, you will have to pay your rent monthly, before the 10th of every month.  
You can pay your rent online at:

<https://study.agro-bordeaux.fr/online-payment/>

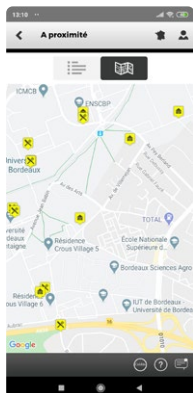
Or you can go to the accounting department, located at the ground floor of the Rosalind Franklin building. We recommend that you check their opening hours beforehand.

## UNIVERSITY CANTEENS



University restaurants are located throughout the campuses as well as in the city center.

They offer healthy, balanced meals for just €3.30.



You can download the **app Crous Mobile**, which can provide you with information on housing, about where and when to eat every day.

The closest University Restaurant is located in the Espace Multi-Service, a 3,500m<sup>2</sup> brand new building located right behind the Bordeaux Sciences Agro Campus.

It is also housing concerts, practice rooms for dance, theatre and music and many other things. You should have a look for yourself!

## BORDEAUX SCIENCES AGRO LIBRARY

This is where you may carry out your research and study!

Publications and reviews may be consulted in the library or borrowed. There is also a wealth of on-line resources (reviews, databases...) available.



The Bordeaux Sciences Agro Library has nearly 30,000 books in relation with the training proposed at BSA: economy, agriculture, environment, sciences, animal production, crop production, food processing, forestry, viticulture, oenology, computing and information technology, foreign languages ... And it subscribes to more than 230 journals.

### FACILITIES

- ▶ A reading room
- ▶ Computers connected to the Internet
- ▶ Free access to copier and printer
- ▶ 6 Small work rooms for 6 people
- ▶ 2 large work rooms for 15 people

### OPERATIONAL HOURS

Monday: Opening from 9am to 7pm

Tuesday: Opening from 8.15am to 7.45pm

From Wednesday to Friday: 8.15am - 7pm

## BOOKING OF THE SMALL WORKING ROOMS OUTSIDE OF THE OPERATIONAL HOURS

The small work rooms can be booked outside of the operational hours using the numerical working environment, later in the evening and during the week-end. Only the working room will be accessible, the book consultation area will remain inaccessible.

## NUMERICAL WORKING ENVIRONMENT (ENT)

As a student, you will have access to Bordeaux Sciences Agro's numerical working environment. It's a great organizational tool with many functions: email, agenda, time table, online classes and resources, grades, but also online booking of working room, career center and our Issue tracking system & Service desk.

Your login and password will be given to you on the first days of your arrival.

The screenshot shows the 'Espace Numérique de Travail' (ENT) interface. At the top, there are four icons: a calendar, an envelope, a first aid kit, and a group of people. Below these is the 'Espace Numérique de Travail' header with a description: 'Ce portail vous permet d'accéder à l'ensemble des services numériques de l'établissement : messagerie, agenda, emploi du temps, cours en ligne, notes et résultats...'. To the right is a large image of a vineyard with the text 'JOURNÉES TECHNIQUES DE L'AGROÉCOLOGIE AU VIGNOBLE' and 'bordeaux sciences Agro et Vitinov organisent leurs journées techniques de l'agroécologie au vignoble les 14 et 15 novembre 2017 sur le (...)'. Below the header is a section titled 'SERVICES NUMÉRIQUES' with eight icons: 'ANNUAIRE', 'BIBLIOTHÈQUE', 'ÉVALUATION DES ENSEIGNEMENTS', 'VIDÉOCONFÉRENCE', 'CV', 'ESPACE CARRIÈRE', 'ENVOI DE GROS FICHIERS', 'PLANIFIER VOS RÉUNIONS', and 'COMPTE PHOTOCOPIE'. To the right of this section is a 'FIL D'ACTUALITÉ' (News Feed) with three items: 'Japon-Programme Vulcanus 2018-19' (7 novembre - 20 janvier 2018), 'Taiwan- Bourses de stages 2018!' (6 novembre - 16 janvier 2018), and 'AUF Appel à candidatures - Soutien à mobilité de stage 2018 - 6 novembre - 5 janvier 2018'. Each item has a date and a link icon.

## STUDENT ASSOCIATIONS

We have many student associations, so you can be fully committed and active in your student role! There are also associations related to your field of study as well as cultural/sport/humanitarian associations...

The activities proposed are varied and will help your integration process as well as allowing you to discover new passions and talents! Most of student associations at Bordeaux Sciences Agro are coordinated by "Bureau des Élèves".

## LE BUREAU DES ÉLÈVES

Le Bureau des Élèves is an association managed by Bordeaux Sciences Agro first year students. Its aim is to coordinate student life activities on Bordeaux Sciences Agro's campus.

This association is in charge of the organization of student life events such as the annual concert for example, and the general and financial management of several clubs. You can have a look for yourself on the page:

<https://vieetudianttebsa.com/>

Please contact Le Bureau des Élèves (BDE) for any information concerning student's activities and associations.

Contact: [bde@agro-bordeaux.fr](mailto:bde@agro-bordeaux.fr)  
Facebook: BDE BSA

## SPORTS



During your stay at Bordeaux Sciences Agro, you'll be able to register for a physical activity such as basketball, volleyball, handball, and many other available sports with the Bordeaux Sciences Agro Sport association.

Students are given a lot of time dedicated to the practice of a physical activity; students can practice it either at the school or in a private club.

This physical activity is taken into account in their study program through their 3 years of training. It is mandatory and will be part of the grade of their final exam.



Here are some activities proposed by the sport association of Bordeaux Sciences Agro:

Handball, Volley, Basket, Rugby, Soccer, Badminton, Tennis, Swimming, Judo, Indoor Climbing...



To practice these activities, we have many sports facilities on the campus of Bordeaux Sciences Agro: a gymnasium, a soccer field, a rugby field, weights room and a dojo. You can get the year sport planning by sending a message through Facebook to AS Bordeaux Sciences Agro.

## Cultural Life

### CARTE JEUNE MÉTROPOLE



Museums, Concerts, Theatre, Cinema, Sports, Leisure... the Carte Jeune Métropole offers many discounts for students from 18 to 25, in Cinemas as well as exhibitions, rugby & football matches!

You can apply for the digital card and check out the different partners on the following website:

<https://cartejeune.bordeaux-metropole.fr/>

You will need to provide a scan of the following documents:

- ▶ A proof of address
- ▶ Your identity card or passport

You will promptly receive an email with the electronic version of the card.

### CONCERTS

Bordeaux being one of France's major cities, many international and French artists are giving gigs & concerts during the whole year. Many concerts hall are present on Bordeaux, each offering different styles and budgets.

The biggest one is the Arkea Arena, but many other exist, such as the Krakatoa, Darwin, Le Rocher de Palmer, the National Opera of Bordeaux...

## MUSEUMS

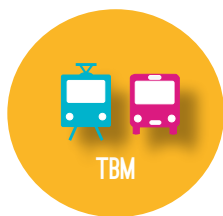
Bordeaux has twelve museums, including: Fine arts, Contemporary arts, Decorative arts & Design, Natural History, Archeology, Ethnography and Regional History.

These are free every first Sunday of every month. The museums of Cité du Vin (Wine City) and Wine Trading - while not free on the first Sunday of the month - are also worth the trip.

You can get the extensive list of Concerts halls, Museums & Theatre on the city website: <http://www.bordeaux.fr/p63866/culture>

## Transport In Bordeaux

### PUBLIC TRANSPORT



Bordeaux offers a wide range of transports: public transports (bus and tram and river shuttle), train, electric cars...

Reduced transport fees for students: You can purchase annual and monthly cards online or at one of the TBM offices.

You will need your student card for any student discounts.



**The annual pass** becomes interesting if you stay at least 6/6.5 months in Bordeaux. The monthly pass is a good solution if you are staying only one semester.

The card is valid from 1st to 31st of each month. You have then to reload your card each month either at the machines or at a TBM office.

**The “Pass Jeune”(Youth Pass) card** which gives you access to the entire transport network (tram and bus) if you are under 28 years old:

- ▶ Annual “Pass jeunes”: €20.40 per month
- ▶ Monthly “Pass jeunes”: €34.40
- ▶ Weekly “Pass jeunes”: €9.90

You can get it done by printing and filling the following form:

<https://boutique.infotbm.com/18-pass-jeune-11-27-ans>

**Other Pass** are also available, such as the **“The Tickarte”** (for occasional travel): **10 tickets at a reduced price (€7.90).**

You must present the TBM card “Tarif réduit étudiant” (free of charge) with this ticket as it validates the price reduction. You can get it done by printing and filling the following form:

[https://boutique.infotbm.com/au-voyage/26-86-ticket-10-voyages-tarif-etudiants.html#/optionticket-sur\\_ticket](https://boutique.infotbm.com/au-voyage/26-86-ticket-10-voyages-tarif-etudiants.html#/optionticket-sur_ticket)

You can then bring it to one of the following agencies: Gambetta / Quinconces / Saint-Jean / Buttinière/ Arts & Métiers.

Don't forget to bring:

- ▶ a recent identity picture (H: 4,5cm x W: 3,5cm),
- ▶ a photocopy of your student card or of the CVEC form

The ticket is available for students under 28 yrs old (35 yrs old for international students) and gives you unlimited access to the Tram, Bus and Batcub (the river shuttle) for an hour after initial validation of the ticket.

## Witick



You can also download your transport tickets directly onto your phone, using the Witick app.

Be careful though, as Student discount are not yet available on the app.

## THE TRAIN

**Carte Avantage Jeune SNCF (Train Discount Card)** is available for students under 28 years old. It usually costs €49, but can be cheaper on some occasions like Sales, Black Friday...



It gives a 30% discount on trains TGV INOUI and INTERCITES, and up to 50% on the TER (Regional Express Train), which is useful if you plan on visiting France during your stay.

You have to produce this card any time you purchase a train ticket via [sncf.com](http://sncf.com) and during controls.

Students who will turn 28 soon, and are interested in applying, can apply before their 28th birthday.

The card will still be valid for 12 months! You can purchase the card at the train station or online:

<http://www.voyages-sncf.com/services-train/carte-abonnement-train/jeune>

If you purchase it online, you may receive your card in a week or two. Please give a correct and valid postal address!

## BORDEAUX BY ELECTRIC CAR

### BLUECUB



BlueCub gives you access to electric cars all over the Bordeaux & Arcachon city, making it possible to go around in an electric car for short distances within the city or from Bordeaux to Arcachon.

## DRIVING LICENSE

You can drive in France with your homeland driving license.

Just make sure to always carry an official translation or an international driving license, as well as your “Carte de séjour étudiant”, or “visa long séjour étudiant” if you’re not European.

## BORDEAUX BY BIKE



Bordeaux is the 4th most bicycle-friendly city in the world. With more than 200 kilometers of cycle paths, the Bordeaux urban area has become a paradise for cyclists.

With VCub, you have a bike 24h/24 and 7 days/7, accessible with a single credit card or a subscription TBM card.

It allows you to combine the Tram, Bus or Bike easily from one mode of transport to another with the "Pass Jeune + VCub" card for an extra €22 on top of the monthly €20.40.

- ▶ More than 2,000 bikes available, with a 1,000 electric ones
- ▶ 179 stations VCub

Very easy to use, you borrow a bike from the station of your choice and bring it back to the nearest bike station. The journeys of less than 30 minutes are free after accession. Once you are registered, you can use VCub as many times as you wish.

## FLIGHTS FROM BORDEAUX

Mérignac airport (from which you've probably arrived) gives access to many French cities and European destinations.



Provided that you book soon enough, you can visit France and European Countries for a cheap budget!

## PHONING



### MOBILE PHONE OPTIONS

Obtaining a mobile phone in France is simple. You have two options: buy prepaid credit or obtain a one-or two-year contract.

You will have to do a little research into which mobile company fits your needs the best, so feel free to shop around at mobile phone shops located throughout Bordeaux and ask questions!

Mobile phone companies:

- ▶ Orange / Sosh
- ▶ SFR / Red by SFR
- ▶ Bouygues Telecom
- ▶ Free Mobile

### OPTION 1: SIGNING A BINDING CONTRACT

If you plan to stay in France for longer than six months, and don't have phone yet, getting a mobile contract is the most economical choice. In order to obtain a mobile contract you must first have a French bank account.

Phone packages typically include the phone itself, unlimited text messages within France, as well as 1-2 hours of telephoning. Internet (4G+) may also be included depending on the package you choose.

There is a first high-value payment to make, followed by lower monthly payment spread on a duration of 1 to 2 years depending on the contract. Be careful, as the value of the monthly payment may increase after the first year.

### OPTION 2: SIGNING A NON-BINDING CONTRACT

This is similar to the previous option, except that the contract can be suspended anytime, and the phone is not included in the contract. Most of them have unlimited phone calls and sms for French numbers, for a price ranging from €12 to €35, depending on the amount of data purchased.

Low-cost options with 2h calls and unlimited sms (but no data) can also be found for €2 or €3 depending on the provider.

## MAKING PHONE CALLS

French numbers are ten digits long and are displayed in pairs of two.

### Calling French numbers:

From a French phone: Dial the number starting with a zero, without the country code.

Example: 06 76 80 67 65

### From an international mobile phone:

Dial the number with the country code and remove the zero from the first pair of numbers.

Example: +33 6 76 80 67 65

### From an international landline:

Dial the number with two zeros and the country code.

Example: 0033 6 76 80 67 64

### Calling international numbers from a French phone:

Dial two zeros, the country code, and then the phone number.

For example, to call Canada: 00 1 403 555 7477

## WIFI

International calls can also be made through WIFI, using different apps such as Messenger, WhatsApp...

WIFI is available in the Accommodations provided by a private operator, Wifirst, for a monthly cost of €14,99. You can create an account (using the library's WIFI for example) on the following website:

<https://selfcare.wifirst.net/sessions/new>

## DRIVE FERMIER

You can order fresh and local products such as fruits, vegetable, dairy, meat, fish and many others on the Drive Fermier. All you need to do is create an account on the website:

<https://www.drive-fermier.fr/33/>



You can then get fresh groceries by ordering before midnight on Wednesday (don't forget to select Bordeaux Sciences Agro as a delivery place!). Your items will then be delivered on the following Friday.

The best seller is the "Panier de Légumes" (Vegetable Basket), which offers a great selection of seasonal vegetables for €12.

Please do not forget to get your transcript of records before leaving Bordeaux Sciences Agro and France, as it will facilitate administrative formalities to obtain your diploma when you go back to your university. If you have any questions about that, do not hesitate to contact the Department for Academic Affairs:

etudes@agro-bordeaux.fr

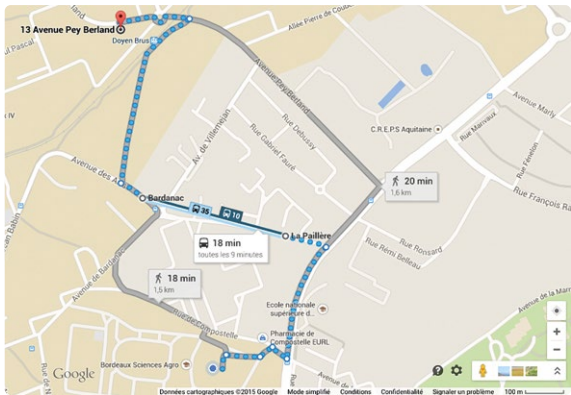
Tel: 05 57 35 07 42

© 2005 Blackwell Publishing Ltd, *Journal of Internal Medicine* 258: 103–111

---

Do not forget to provide one full month's notice when you want to leave your rented accommodation. If you are renting an accommodation on Bordeaux Sciences Agro's campus, you'll need to send it by registered letter to:

Service Hébergement Bordeaux Sciences Agro  
1 cours du Général de Gaulle - CS 40201  
33175 Gradignan Cedex  
France



---

Do not forget to close your French bank account before leaving.



## Where to obtain medical care?

Student Health Center  
13 avenue Pey-Berland Pessac  
Tram B – Tram stop Doyen Brus  
Tel: 05 56 04 06 06

- ▶ From Monday to Thursday: 9am to 7pm
- ▶ Friday: 9am to 5pm

You can also make an appointment online at:

<https://www.u-bordeaux.fr/Campus/Espace-sante-etudiants>

Closing dates:

- ▶ Christmas school holidays
- ▶ From the 14th July until the 31st August.

It's the place to come to ensure that you remain in good health for the duration of your stay in Bordeaux Sciences Agro.

Professional teams are present to welcome, provide advice and inform you as regards your needs: medical appointments, nursing services (free nursing care possible without prior appointment, health reviews), immunization updates and medical certificates allowing the practice of sport.



## EMERGENCY NUMBERS

An emergency number from Bordeaux Sciences Agro is also available at the information desk.

### EMERGENCY SERVICES

### NUMBERS

› SAMU	15
› Fire Brigade	18 or 112
› Police	17
› SOS Doctors	05 56 44 74 74 or 3624
› Anti-poison center	05 56 96 40 80
› Social Emergency	115
› Victim support service	05 24 57 42 50
› Emergency Welcome Center for victims of violence	05 56 79 87 77
› Bordeaux Police Station	05 57 85 77 77
› Talence Police Station	05 57 35 77 22
› Pessac Police Station	05 57 93 63 70

### Pharmacy open 24h/24h



#### Pharmacie des Capucins

30 place des Capucins  
33000 Bordeaux

Téléphone: 05 56 91 62 66

Tramway Victoire (Tramway B)  
Bus Capucins



## International Relations Office

---

**Dounia YELLES**

[international@agro-bordeaux.fr](mailto:international@agro-bordeaux.fr)

+33 (0)5 57 35 07 10 / 4110



## Accommodation

---

**Virginie LEFRAIS**

[hebergement@agro-bordeaux.fr](mailto:hebergement@agro-bordeaux.fr)

+33 (0)5 57 35 07 10 / 4110

## Academic Affair Officers

---

[etudes@agro-bordeaux.fr](mailto:etudes@agro-bordeaux.fr)



### 1st year training manager

---

**Angélique MAINDRON**

+33 (0)5 57 35 07 25 / 4925



### 2<sup>nd</sup> year training manager

---

**Lydie BAUDIN**

+33 (0)5 57 35 07 42 / 4210



### 3rd year training manager

---

**Sandrine LARDEAU**

+33 (0)5 57 35 07 22 / 4122



### "Master Vineyard & Winery Management" and "Bachelor" training manager

---

**Olivia ROUPPERT**

+33 (0)5 57 35 86 28 / 8628



## SPEAK FRENCH

### Basics

Hello _____	Bonjour
Goodbye _____	Au revoir
Good afternoon _____	Bonjour (après-midi)
Good evening _____	Bonsoir
Thank you (very much) _____	Merci (beaucoup)
No, thank you _____	Non merci
Yes/No _____	Oui/Non
Please _____	S'il vous plaît
Excuse me _____	Excusez-moi
I'm sorry _____	Je suis désolé(e)
You're welcome _____	Il n'y a pas de quoi
Really? _____	Ah bon ? C'est vrai ?
I'd like... _____	Je voudrais ...
Where is...?/Where are...? _____	Où est ... ?/Où sont ... ?
How...? _____	Comment ... ?
Why...? _____	Pourquoi ... ?
When...? _____	Quand ... ?

### Making travel arrangements

Round trip ticket _____	Aller-retour
One-way ticket _____	Aller-simple
Seat _____	Siège
Train station _____	Gare
Train _____	Train
Flight _____	Vol
Airport _____	Aéroport
I'm lost _____	Je suis perdu(e)

## Hungry?

I'd like some bread, please _____	Je voudrais du pain, s'il vous plaît
I would like some water _____	Je voudrais de l'eau
Breakfast _____	Petit déjeuner
Lunch _____	Déjeuner
Dinner _____	Dîner
Cheese _____	Fromage
Coffee _____	Café
Beer _____	Bière
Wine _____	Vin

## Useful terms

I don't understand _____	Je ne comprends pas
Can you repeat that? _____	Pouvez-vous répéter ?
Could you speak slowly? _____	Pouvez-vous parler plus lentement ?
I don't speak French very well _____	Je ne parle pas bien français
Do you speak English? _____	Parlez-vous anglais ?
I don't know _____	Je ne sais pas

## How to ask for directions in french

I want to go to... _____	Je voudrais aller à ...
How do I get to... ? _____	Comment je fais pour aller à ... ?
Excuse me please! _____	Excusez-moi
Could you please tell me where... is? _____	Est-ce que vous pouvez me dire où est ..., s'il vous plaît ?
Left _____	Gauche
Right _____	Droite
To the left _____	À gauche
To the right _____	À droite
A Straight _____	Tout droit
At the end of _____	Au bout de
At the beginning of _____	Au début de
Around the corner _____	Au coin de la rue
The next street to the left _____	La prochaine rue à gauche
The next street to the right _____	La prochaine rue à droite
In front of _____	En face de
Next to _____	À côté de

## Greetings: hello and goodbye

Cheek kissing is another common type of greeting in most French-speaking countries. However, the rules for cheek kisses can be a complicated matter.



The rules change depending on the country you're in and even the region of the country. For example here in Bordeaux, the common number of cheek kisses is two, but when you meet someone for the first time, you can usually just shake hands.

In France, most schools, government offices, banks and businesses are closed on public holidays. There are currently 11 public holidays in France.

- |                                 |                                       |
|---------------------------------|---------------------------------------|
| ▶ 1 January<br>(New Year's Day) | ▶ 14 July<br>(France's national day)  |
| ▶ Easter Monday                 | ▶ 15 August (Assumption)              |
| ▶ 1 May (Labor Day)             | ▶ 1 November<br>(All Saints' Day)     |
| ▶ 8 May<br>(Armistice Day 1945) | ▶ 11 November<br>(Armistice Day 1918) |
| ▶ Ascension Thursday            | ▶ 25 December<br>(Christmas Day)      |
| ▶ Pentecost Monday              |                                       |

## Business hours

In general, shops are open between 9-10am and 7pm (8pm for some of the major chains), Monday to Saturday, except in small towns where most shops close between midday and 2pm.

In France shops are closed on Sundays, with some exceptions – big shopping centers, the Christmas period, tourist areas, etc.

## Environment

France, like many countries, practices recycling. In most buildings there are three types of rubbish bins, with different colored lids:

- ▶ **GREY lids: for non-recyclable household waste**
- ▶ **GREEN lids: for recyclable household waste such as:**
  - Steel and aluminum wrappings (beer cans, tins, aerosols etc.)
  - Paper and cardboard wrappings (cereal/cake boxes, milk/soup cartons, etc.)
  - Newspapers and magazines
  - Plastic bottles (water/dishwashing liquid/shower gel/shampoo bottles, etc.)
- ▶ **YELLOW lids: for glass, jars, pots and other glass containers**

In case of doubt, put it in the GREY-lidded bin.

## Smoking

In France the law forbids smoking in public places except in designated smoking areas, both inside and outside (restaurants, cafés, shops, universities) as well as in collective transport (planes, trains, the metro). In practice, people smoke outside in certain public places (the terraces of restaurants and cafés).

At universities and higher education establishments, the head of the institution decides whether or not to authorize smoking outside.

At Bordeaux Sciences Agro, smoking is only authorized outside the premises.

## Eating and Shopping

The French usually eat three meals a day: breakfast between 7 and 8 am, lunch at around 12.30 pm and dinner at around 8 pm.

## Eating out

For students; the cheapest option is the “restaurant universitaire” (restoU), which offers a complete meal for around €3. These restaurants are open to all holders of a student card.



Another possibility is the lunchtime menu offered by most cafés and restaurants.

A menu usually includes an entrée, a main course and a dessert for a fixed price, or simply a main course and a dessert.

In France the ham and cheese or ham and butter sandwich from the local bakery is a great lunch-time favorite. It's cheap!

In France, it's exceptional to find restaurants open 24/7.

Most restaurants open between midday and 3pm and then again from 7-11pm.



## Restaurants

Tipping in France is not mandatory. Generally tips are not given for ordering coffee or alcoholic beverages; however, a couple of coins left after a meal if the service was good is appreciated, but not expected.

For example, when paying the bill for a dinner for 2 people, €3 is quite a nice gesture but not mandatory.

It's really up to you (A service charge is included in the bill).

## Food and grocery shopping

There are numerous small shops and supermarkets in town (Carrefour Market, Carrefour City, Monoprix, Super-U, Intermarché, etc.) where you can do your food shopping. Carrefour City only sells food products, but the others sell everything.

The big supermarkets and other major stores are usually located in the commercial zones on the outskirts of Bordeaux.

The cheapest are the “hard discount” stores such as Leader Price, Ed, Aldi and Lidl.

## The tradition of the farmers' market in France

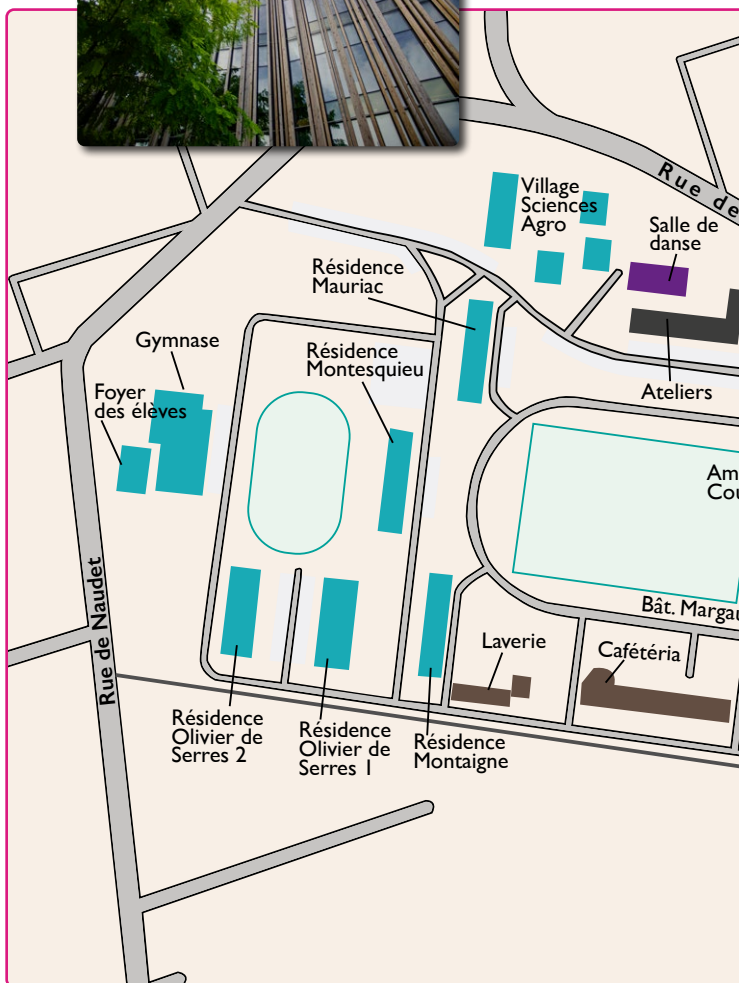
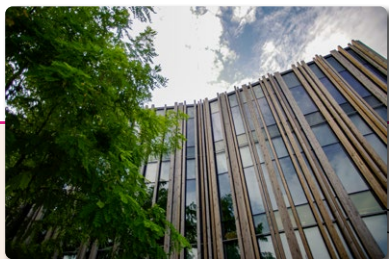
Many French people buy their fresh products (vegetables, meat, cheese, etc.) at farmers' markets. The Capucin market is one of the most important markets in Bordeaux; you will find there a lot of traditional food and fresh products. It takes place at Place des Capucins and it is open from Monday to Sunday (7.30 am to 12.30 pm).

Another example in Bordeaux is the Quai des Chartrons Market which takes place every Sunday morning from 7am to 1pm along the docks, and is very famous for its “spécialités bordelaises” and other products you will not find elsewhere.

## Administrative formalities

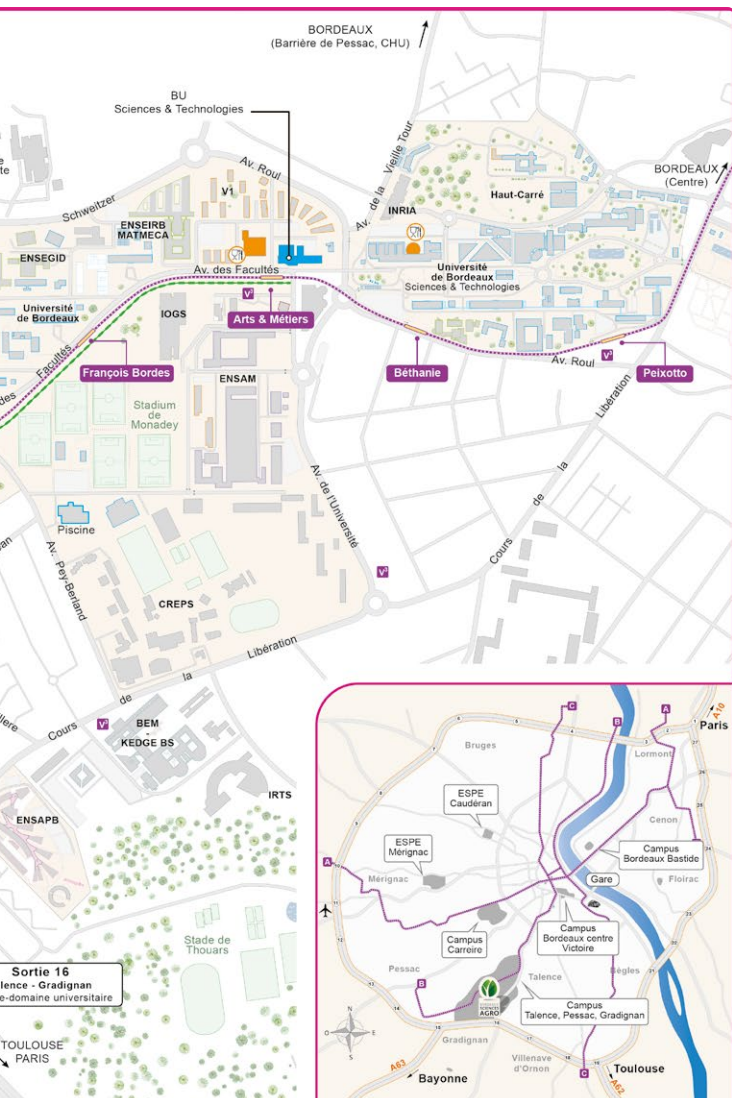
Finally, it is important to know that in France administrative formalities can last a few days and sometimes even a few weeks, it may seem like a long time but when it's done, you will notice that it is effective, you won't have to do it again!

## » BORDEAUX SCIENCES AGRO'S MAP

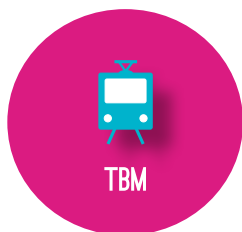








# » TRAM (GENERAL MAP)



**TBM** TRANSPORTS  
BORDEAUX MÉTROPOLE

[www.infotbm.com](http://www.infotbm.com) - AlloTBM 05 57 57 88 88

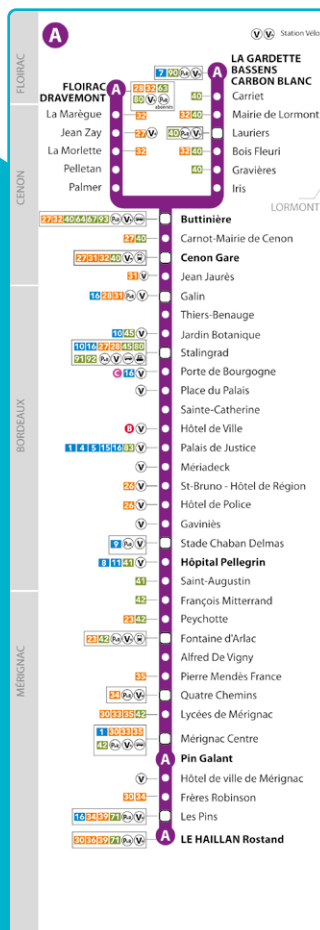
© plan Lattitude-Cartagline - © Illustrations Guillaume - 0230



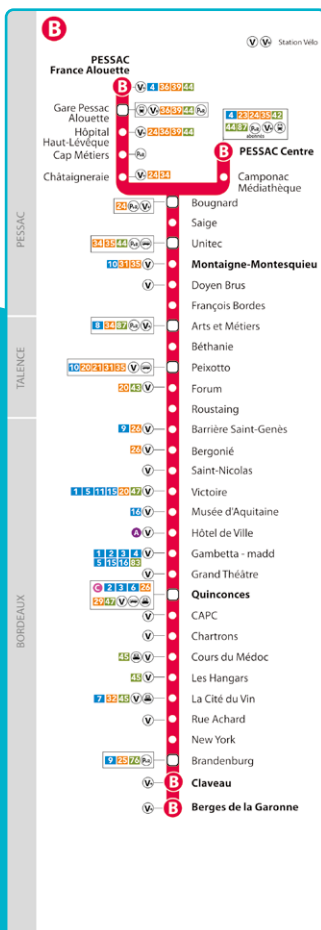


# » TRAM (A, B, C AND D LINES)

## LINE A

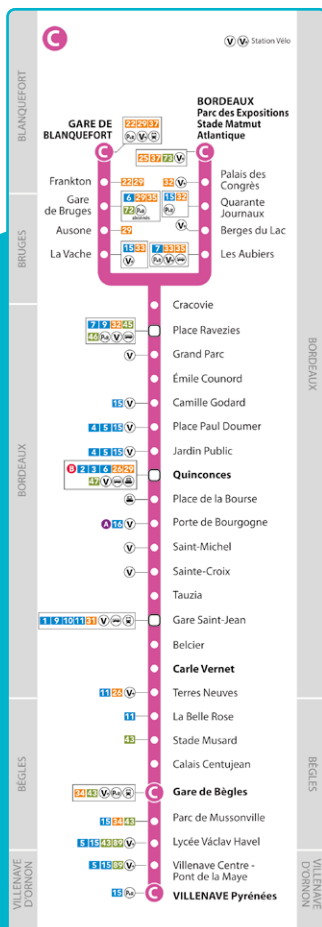


## LINE B

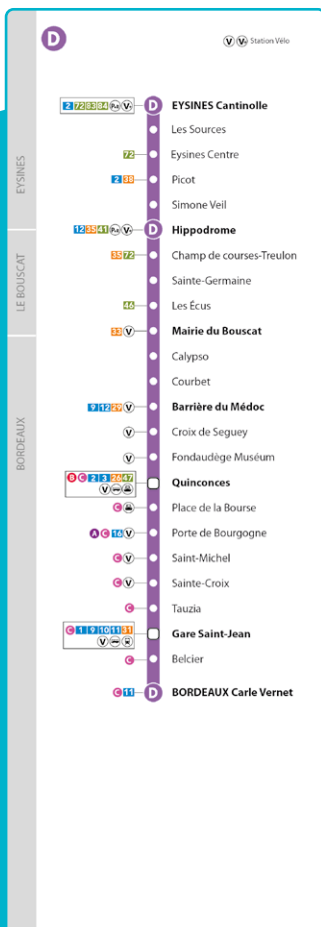




## LINE C



## LINE D





## Copyright

---

**Réalisation :** Service Communication de Bordeaux Sciences Agro  
Fabrice Hardy - Accolades digitales

**Rédaction :** Service Relations Internationales  
de Bordeaux Sciences Agro

**Impression :** BLF Impression

### **Crédits photos et illustrations :**

Bordeaux Sciences Agro • Université de Bordeaux • Phovoir images  
Fotolia • Free Vector Maps.com • Savinien Tonelli Photographe • Marion  
Lucas • Fabrice Hardy - Accolades digitales • Florian Costenoble •  
Pline (CC BY-SA 3.0)

### **Cartographie :**

TBM • Infographie 2015 © Université de Bordeaux - Direction des  
Systèmes d'Information • Données cartographiques © 2015 Google





BORDEAUX  
SCIENCES  
AGRO

Visit  
our  
WebSites!  
////////////////



[www.agro-bordeaux.fr](http://www.agro-bordeaux.fr) (FR)  
[study.agro-bordeaux.fr](http://study.agro-bordeaux.fr) (ENG)



Follow, like,  
watch us  
on social media  
////////////////

